

Features

- Tested and certified to California Title 24 standards and JA8 2016 requirements
- Includes mirror defogging
- Dimmable LED task lighting to 1%
- Compatible with most Triac/Phase-cut dimmers
- Energy efficient LED lighting: (measurements may vary)

Kelvin	2700
CRI	90+
R9 Value	50+

Construction

- Anodized aluminum back frame
- Quality polished edge mirror
- Power cords installed for easy plugin installation
- Constructed for surface mounting
- Includes installation hardware

Codes/Standards Applicable

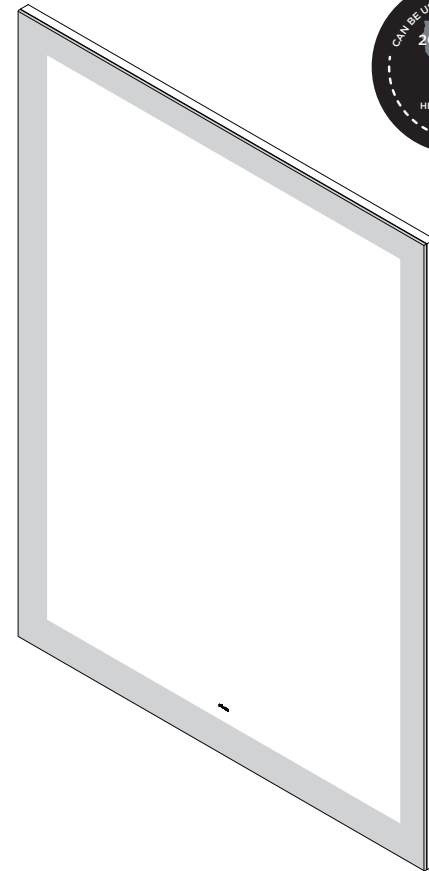
- Vitality Mirror is UL certified to:
- UL 962
 - CSA-C22.2, No. 12-82

Dimensions

Height: 40" (1016 mm)
 Width: 30" (762 mm)
 Depth: 1-3/4" (45 mm)
 Net Weight: 23 - 39 lbs

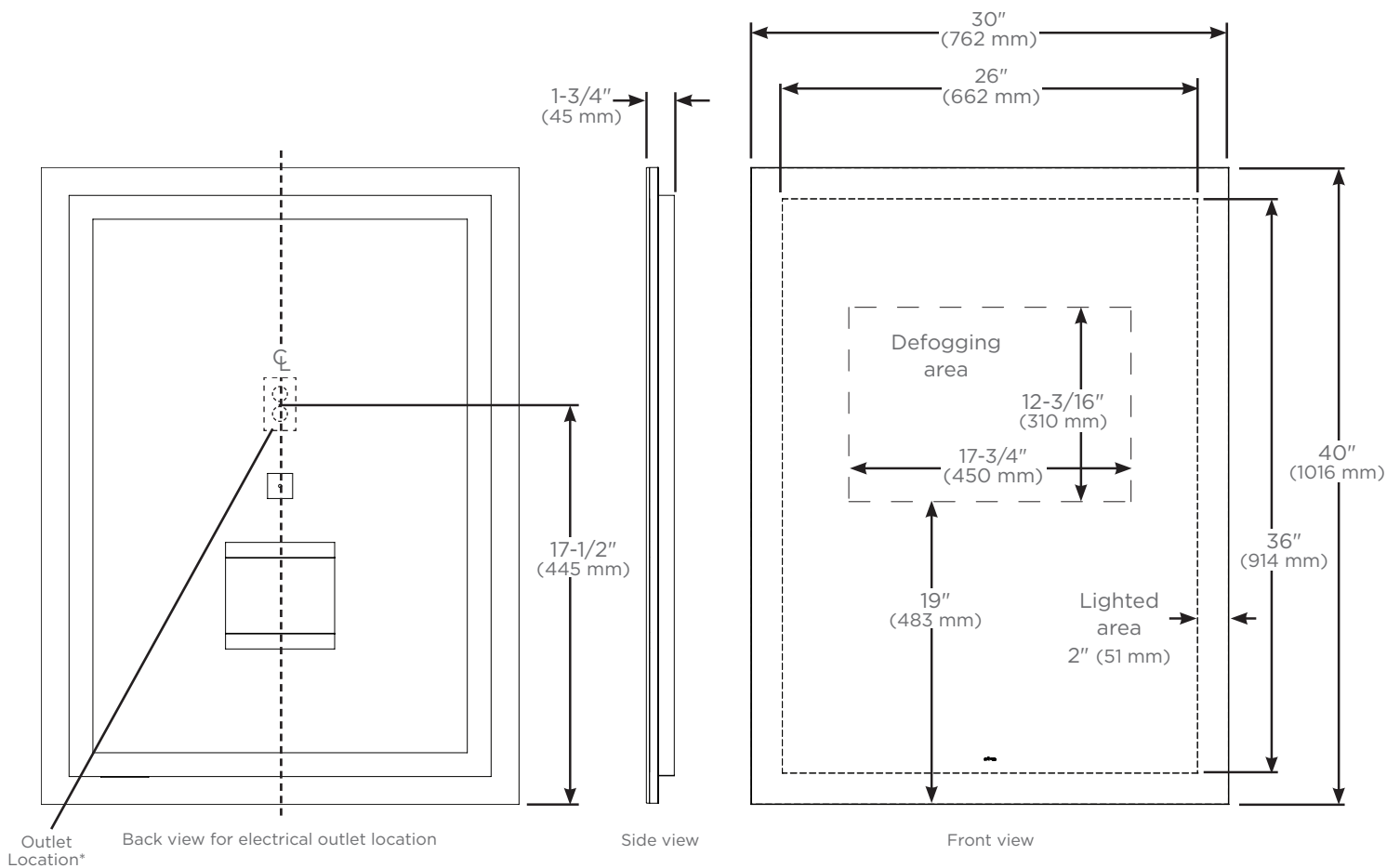
Electrical System

- 120 Vac 60Hz wall outlet location as shown in drawing



Model Number Key

Vitality	Mirror	Width	Height	Shape	Light Pattern	Edge Type	Defogger	Color Temp	Options
Y	M	30	40	R = Rectangle	P = Perimeter	FP = Flat, Polished	D = Defogger	3 = 2700K	K = Title 24 Compliant Model



* See instructions 290-1277 for wiring and location
 For additional information regarding Title 24 contact customerservice@robern.com